

# Skills & Talent Initiative



Greater Washington Partnership is a first-of-its-kind nonprofit alliance of CEOs and other C-suite executives from Maryland, Virginia, and Washington, DC. Founded to unite the voice and influence of the private sector across the region, Greater Washington Partnership develops actionable strategies, builds cross-sector partnerships, and informs policy to drive long-term regional growth.

The Partnership's Skills & Talent Initiative brings together educators, employers, government, and nonprofits to expand regional career pathways that connect students and jobseekers to economic opportunity and meet employers' talent needs. Through convenings, thought leadership, and program management, the Partnership drives cross-sector collaboration to address education-to-workforce challenges and build responsive talent pipelines.

## Regional Impact

### Collaborative of Leaders in Academia and Business (CoLAB)

The Partnership's Collaborative of Leaders in Academia and Business (CoLAB) unites the region's top employers and higher education presidents to drive coordinated action on talent development. Together, they strengthen employer-educator collaboration in talent pathway design, advance innovative work-based learning models, and work to expand access to education-to-workforce data - all to ensure the region's workforce is prepared for the jobs of today and tomorrow.

### College Leadership Council for Regional Tech Pathways (CLC)

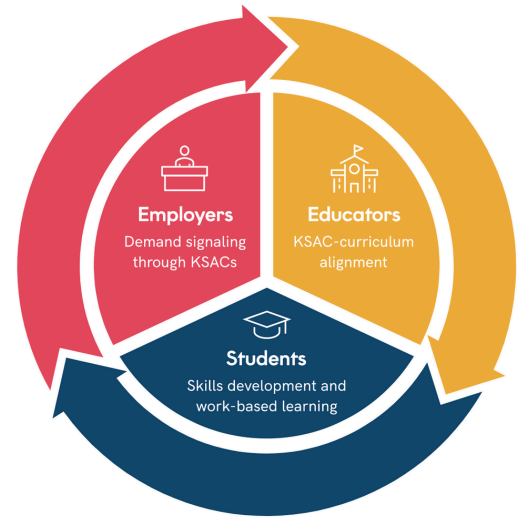
In 2025, the Partnership launched the College Leadership Council (CLC) - a postsecondary community of practice bringing together academic leaders who oversee technology programs across the region's community colleges and universities. The CLC meets quarterly to drive alignment between tech talent development and employer demand, advance collaborative strategies to strengthen the regional workforce, and build on the foundation of CoLAB to ensure sustained progress toward shared goals across business and academia.

The CLC's membership includes representatives from the following institutions:



## Employer Signaling

Drawing on the insights and expertise of the Partnership's robust employer network, the Employer Signaling System (ESS) is an innovative workforce intelligence tool that identifies the skills and credentials most critical for the region's in-demand jobs. Through data sharing and validation with leading employers, the ESS combines real-time labor market data with in-depth Knowledge, Skills, Abilities, and Credentials (KSACs) to create actionable insights for educators – empowering high schools, community colleges, and universities to align programs with in-demand careers and equip learners with the skills to thrive in the region's most competitive industries.



## TalentReady

Since 2018, the Partnership and Education Strategy Group have co-led TalentReady, a regionwide initiative generously supported by JPMorgan Chase, that builds high-quality career pathways and expands access to work-based learning opportunities for students across the region. In collaboration with five K-12 jurisdictions – Baltimore City, Washington, DC, Fairfax County, Montgomery County, and Prince George's County – TalentReady bridges the gap between education and employment, preparing more young people for in-demand careers and strengthening the region's long-term competitiveness.

## Future of Talent

The Future of Talent Partner Conversation Series brings together leaders from education, business, government, and the nonprofit sector to catalyze ideas and drive action across the region's education-to-workforce ecosystem. Each conversation amplifies the voices of innovators shaping the future of work, exploring strategies to strengthen higher-education career pathways, unlock opportunities in emerging industries, and advance public-sector efforts that fuel regional growth.

